

# Differences between Primary, Secondary and Tertiary Contacts



## ALFRED TESTED POSITIVE FOR COVID-19

### PRIMARY CONTACT

DAVE WAS IN AN ENCLOSED SPACE FOR AN HOUR WITH ALFRED, IN THE 48 HOURS BEFORE ALFRED SHOWED SYMPTOMS. HE MUST ISOLATE FOR 14 DAYS & GET TESTED THREE TIMES (DAY 2, DAY 7 AND DAY 12)



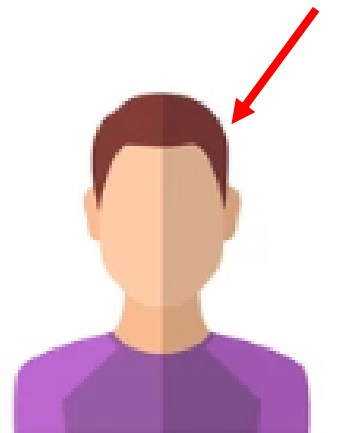
### PRIMARY CONTACT

GINA HAD FACE-TO-FACE CONTACT WITH ALFRED IN THE 48 HOURS BEFORE ALFRED SHOWED SYMPTOMS. SHE MUST ISOLATE FOR 14 DAYS & GET TESTED THREE TIMES (DAY 2, DAY 7 AND DAY 12)



### SECONDARY CONTACT

PHIL HAS BEEN IN AN ENCLOSED SPACE FOR AN HOUR WITH DAVE SINCE DAVE WAS EXPOSED. HE MUST GET TESTED AND ISOLATE. IF PHIL AND DAVE GET A NEGATIVE RESULT, PHIL CAN RETURN TO WORK.



### SECONDARY CONTACT

SUSAN HAS HAD FACE-TO-FACE CONTACT WITH GINA SINCE GINA WAS EXPOSED. SHE MUST GET TESTED AND ISOLATE. IF SUSAN AND GINA GET A NEGATIVE RESULT, SUSAN CAN RETURN TO WORK.



## TERTIARY CONTACT

THIS INCLUDES ANYONE THAT HAS HAD FACE-TO-FACE CONTACT WITH SUSAN OR PHIL, OR HAS BEEN IN AN ENCLOSED SPACE WITH THEM FOR AN HOUR, SINCE THEY WERE EXPOSED. THEY DO NOT HAVE TO ISOLATE OR GET TESTED. THEY MUST MAINTAIN SOCIAL DISTANCING AND HYGIENE PRACTICES AND MONITOR FOR SYMPTOMS